

PENTAX® PocketJet™

Quick Reference Card

Main Switch

Power On: Push main switch once quickly while printer is off.

Form Feed: Push once quickly while printer is on and partial page has been sent to printer.

Power Off: Push twice quickly.

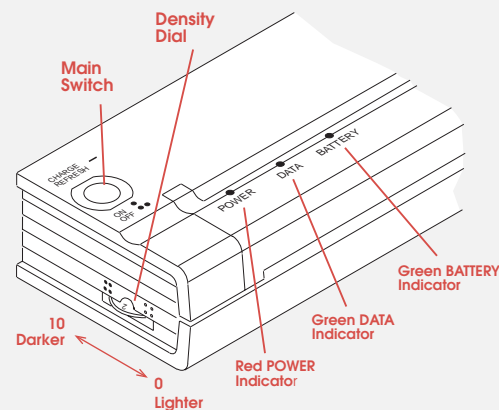
Charge battery: Push once and hold for several seconds until green BATTERY indicator stays lit. When printer finishes discharging battery, it starts to charge battery, and green BATTERY indicator starts to blink.

Refresh battery: While in Charge mode, push once and hold for several seconds until green BATTERY indicator starts to blink.

Power off during Charge or Refresh mode: Push twice quickly.

Density Dial

Density dial is on side of printer closest to operation panel. Larger numbers make prints darker. Smaller numbers make prints lighter.



Charging the Battery

1 Make sure printer is off and it is connected to AC power outlet with AC adapter and power cord.

2 Press main switch and hold it down for a few seconds until green BATTERY indicator stays lit. This puts printer in Charge mode, which completely discharges battery and then charges it. Green BATTERY indicator stays lit until discharging is completed; then it blinks until charging is completed. When finished, printer turns itself off.

NOTE: Your Ni-Cd battery will last much longer and carry a greater charge if it is always completely discharged prior to charging.

Refreshing the Battery

You may refresh a **seasoned** battery **occasionally** when you don't have time to completely discharge and charge it. Refreshing a battery "tops off" the charge without first discharging battery.

CAUTION: This procedure is not recommended, particularly with a new battery, as it may reduce the battery's life and its ability to carry a charge.

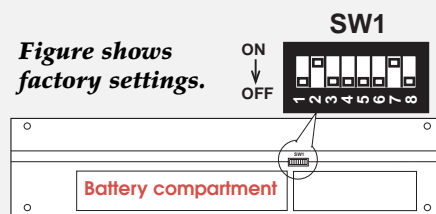
- 1** Make sure printer is off and it is connected to AC power outlet with AC adapter and power cord.
- 2** Press main switch and hold it down for a few seconds until green BATTERY indicator stays lit. This puts printer in Charge mode.
- 3** Press main switch and hold it down for a few seconds until green BATTERY indicator starts to blink. This bypasses discharging process and puts printer in Refresh mode, which charges battery. Green BATTERY indicator blinks until charging is completed. When finished, printer turns itself off.

Tips on Using the Battery

- ◆ Charging battery after it has been completely discharged takes about 70 minutes.
- ◆ When you run printer on battery power, it can print approximately 30-35 pages on a full charge.
- ◆ Darker prints discharge battery faster than lighter prints do. Use density dial to adjust lightness and darkness.
- ◆ Printer's protective vinyl case has sleeve on inside for extra battery. With two batteries, you can print twice as many pages before you have to charge batteries.

DIP Switches

No.	Control	On	Off
1	Serial speed	See below	See below
2	Serial speed	See below	See below
3	Self test	On	Off
4	Cleaning	On	Off
5	Paper size & character set	See below	See below
6	DTR polarity; paper size & character set	Active low	Active high
7	Xon / Xoff	Disable	Activate
8	Auto-off timer	Disable	Activate



Serial Speed: Used with serial interface.

- ◆ 2,400 bps: switches 1 and 2 ON.
- ◆ 9,600 bps: switch 1 OFF and 2 ON.
- ◆ 19,200 bps: switch 1 ON and 2 OFF.
- ◆ 38,400 bps: switches 1 and 2 OFF.

Self-Test Sheet: To print sheet, set switch 3 to ON. Turn printer on. Insert paper. When done, turn printer off. Set switch 3 to OFF.

Clean Print Head: To clean print head with cleaning cloth, set switch 4 to ON. Turn printer on. Press main switch quickly again to start platen roller. Insert cloth with rough black side towards rear of printer. When done, turn printer off. Set switch 4 to OFF.

Default Paper Size and Character Set

Letter/A4 model. Letter & PC-8: switch 5 OFF; A4 & PC-850: switch 5 ON.

Letter/Legal model. Letter & PC-8: switch 5 OFF; legal & PC-8: switch 5 ON.

Letter/Legal/A4 model. Letter & PC-8: switches 5 & 6 OFF; legal & PC-8: 5 & 6 ON; A4 & PC-850: 5 ON & 6 OFF (or 5 OFF & 6 ON).

Serial Handshaking: Used with serial interface. DTR handshaking: set switch 7 to ON. This disables Xon / Xoff handshaking. Xon / Xoff handshaking: set switch 7 to OFF. Letter/A4 and Letter/Legal models: set switch 6 to OFF.

Auto-off Timer: Printer must be powered from its battery. When switch 8 is OFF, printer turns itself off after 60 seconds if it is not receiving data (unless there is data in printer buffer).

Inserting Paper

1 Use both hands to hold paper straight while you insert it into printer's paper input slot. Make sure bottom edge of paper is parallel to feed roller.

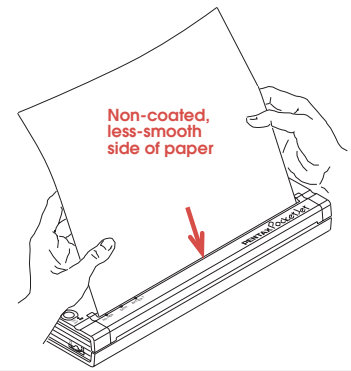
Make sure smooth, coated side of paper faces the back of printer.

2 Press paper gently and evenly into printer's input slot until roller pulls it into starting position, then let go.

If paper is skewed after printer pulls it into starting position, do as follows.

- ◆ If printer *does not* start to print immediately, open release cover as far back as it will go. Pull paper out and reinsert it. Close cover.
- ◆ If printer *does* start to print, wait for page to be printed and then reprint page if necessary.

TIP: If you insert paper before you start print job, you will have time to adjust paper if it is skewed after printer pulls it into starting position.

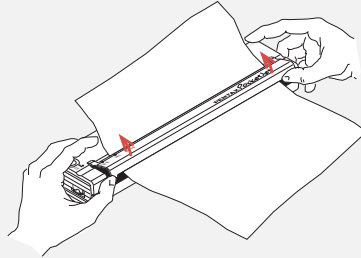


Clearing a Paper Jam

Remove paper as follows when a jam occurs.

- 1 Open release cover as far back as it will go. See figure.
- 2 Gently pull paper out of the printer.
- 3 Reset printer by turning it off and back on again.

When you reset printer, you lose data for page that was printing when jam occurred. Printer will print remaining pages. If necessary, reprint page that jammed as separate print job.



Ordering Paper

For name of dealer closest to you or to place order with Pentax, call **1-800-543-6144** from 8AM to 5PM Mountain Time, Monday through Friday. Ask for Sales.

What To Do if Nothing Prints

Make sure you are using recommended paper and loading it with print side (smooth, coated side) away from you.

Application may have sent a form feed command on a blank sheet. Try printing another print job such as a one-page memo.

Printer may be in cleaning mode. Make sure DIP switch 4 is OFF.

Indicator Light Status

- On
- Off
- ◐ Blinking
- ◑ Either On or Off

Indicator Light Table is on bottom of printer.

Troubleshooting

If you have difficulty getting printer to work properly, check these troubleshooting tips. If they don't solve the problem, call Pentax at **1-303-460-1820** or **1-800-543-6144** from 8AM to 5PM Mountain Time, Monday through Friday. Ask for Technical Support.

POWER indicator does not light.

If you are using AC adapter, make sure it is connected properly. Also make sure AC power outlet is "live."

If you are using battery, make sure it is installed properly. If it is installed properly, follow procedure for charging battery.

POWER and BATTERY indicators are blinking.

A battery error has occurred. Make sure battery has been installed and connected properly. If battery is connected properly,



you may have tried to charge battery while it is overheated. Allow battery to cool before continuing.

If indicators still show a battery error, battery may be defective or printer may need service. Call Pentax and ask for Technical Support.

POWER, DATA and BATTERY indicators are blinking.

A system error has occurred. Turn printer off and on again to clear system error. If you cannot clear it, call Pentax and ask for Technical Support.



POWER and DATA indicators are blinking.

A data I/O error has occurred. If you are using parallel interface cable, parallel connection may be defective. Replace defective part—most likely interface cable.

If you are using optional RS-232C serial interface cable, make sure serial port speed and handshaking on printer and computer match. DIP switches 1 and 2 control speed of serial port. Switch 7 controls handshaking.



If serial port speed and handshaking are correct, serial connection may be defective. Replace defective part—most likely serial interface cable.

POWER indicator is blinking and BATTERY indicator is off.

Thermal print head has overheated. Turn printer off or wait until POWER indicator light stops blinking before you continue printing.



POWER indicator is blinking and BATTERY indicator is on.

Printer is attempting to charge battery, but it is not receiving any AC power. Make sure you have connected printer to AC power outlet.



Green DATA indicator remains lit but does not blink. Page does not print.

Print buffer contains unprinted data from application. If you have already inserted paper, press main switch to "form feed" incomplete page. If not, insert another sheet to continue printing.



Application should be sending data to printer, but green DATA indicator is not lit.

Make sure interface cable matches port (parallel or serial) to which computer is sending data. If you are using serial cable, make sure serial port speed on printer and computer match. DIP switches 1 and 2 control speed of serial port.



Green DATA indicator goes out while page is in printer.

Application did not send full page of data. Remove paper from printer by pressing main switch once quickly to "form feed" incomplete page.

